

# Richard Nichols

*Architect*

David Scott Parker Architects 2015 - Present

John B. Murray, Architect 2015 - 2015

Hamady Architects 2013 - 2015

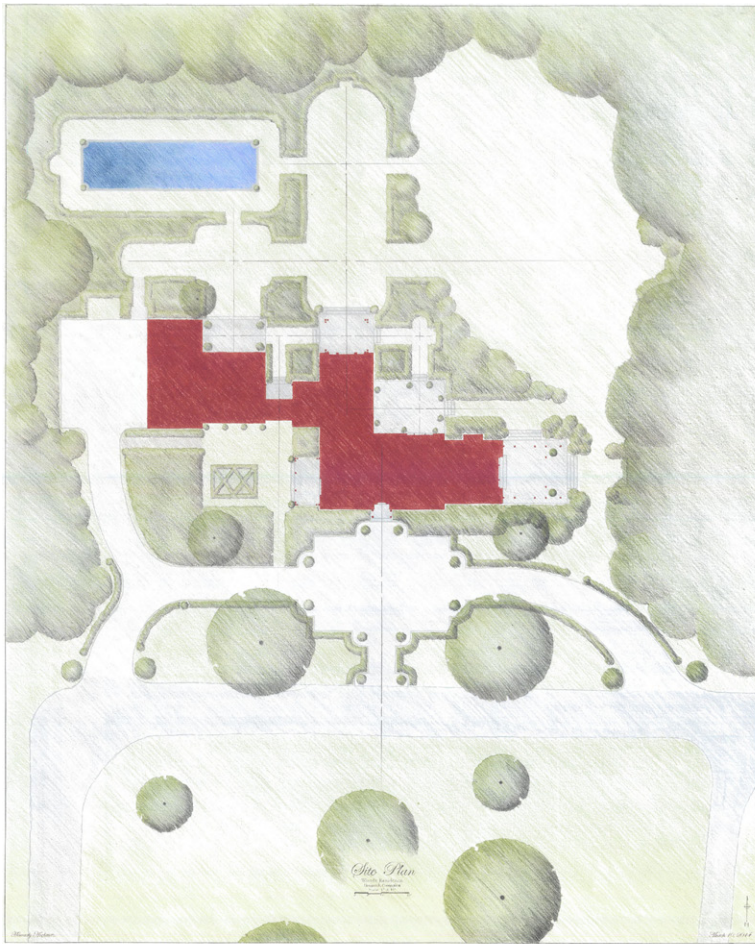
Richard Swann, Architect 2011 - 2012

Master of Architecture 2013  
*Concentration in Traditional Architecture and Urbanism*  
Judson University

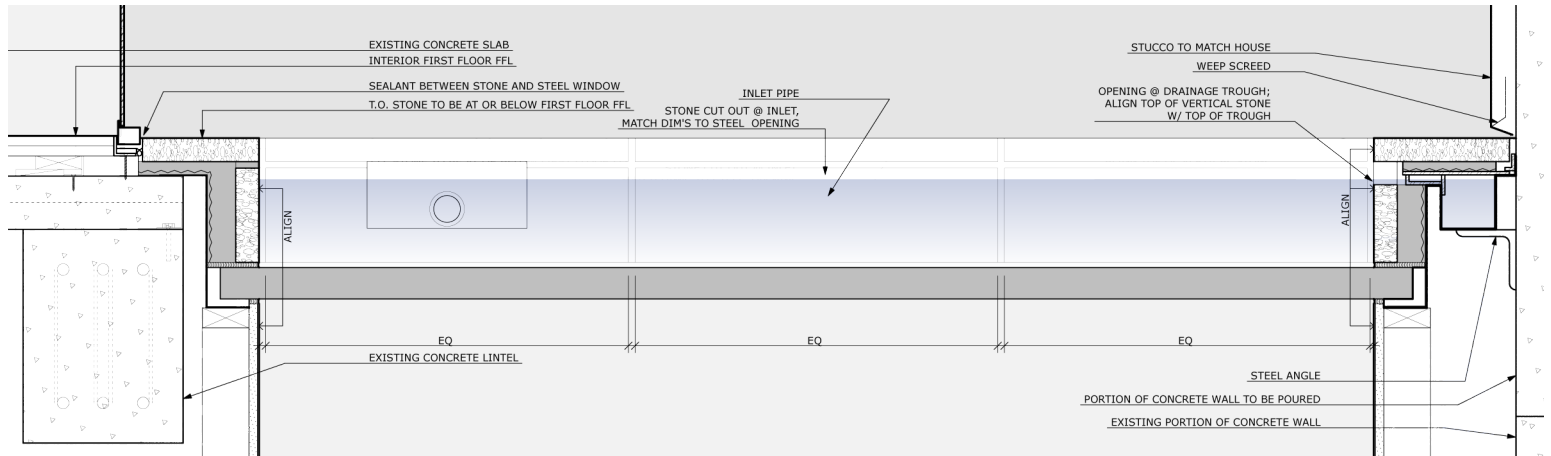
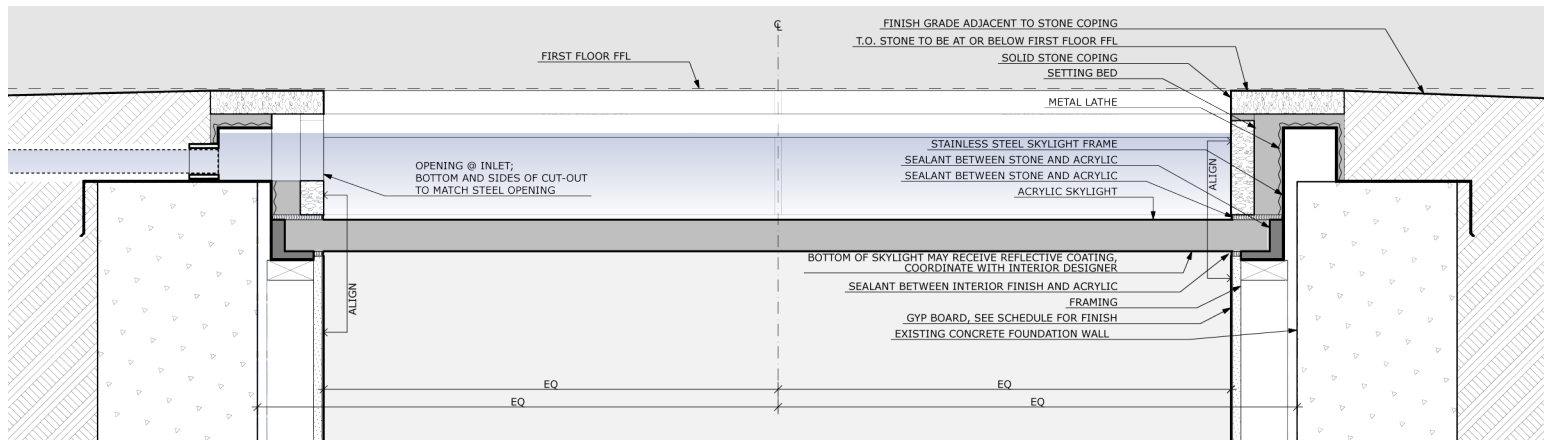
Bachelor of Arts in Architecture 2011  
Judson University







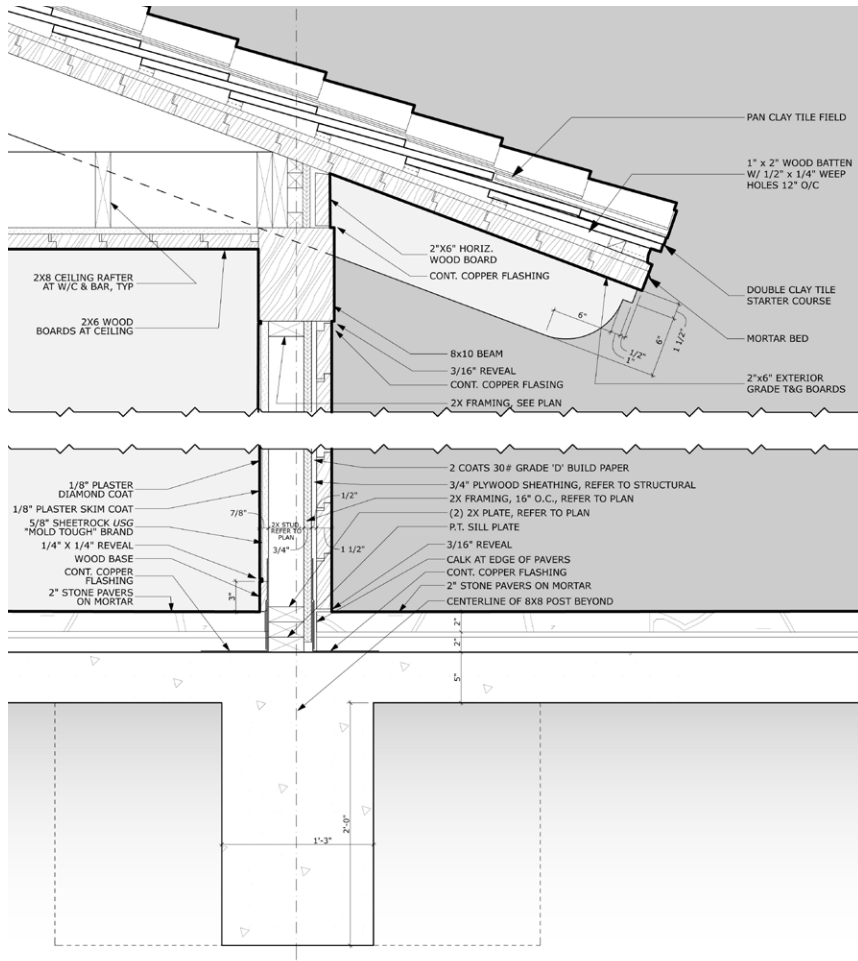




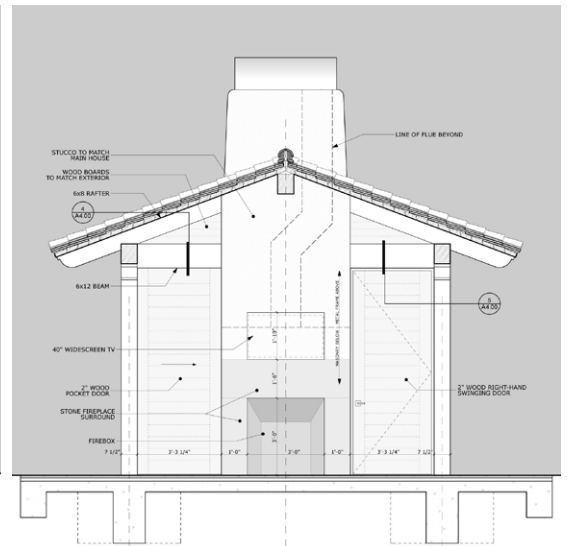
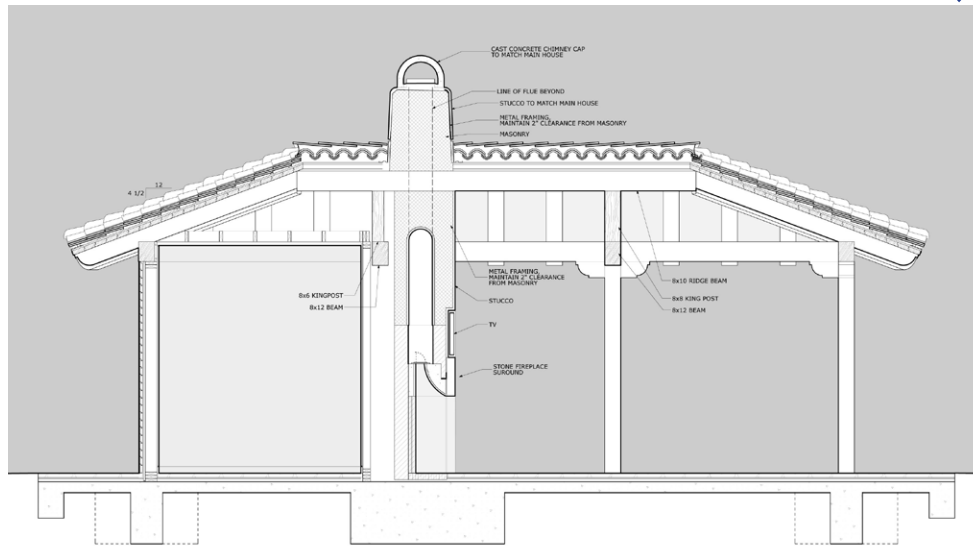
## GLASS BOTTOM POOL ↕

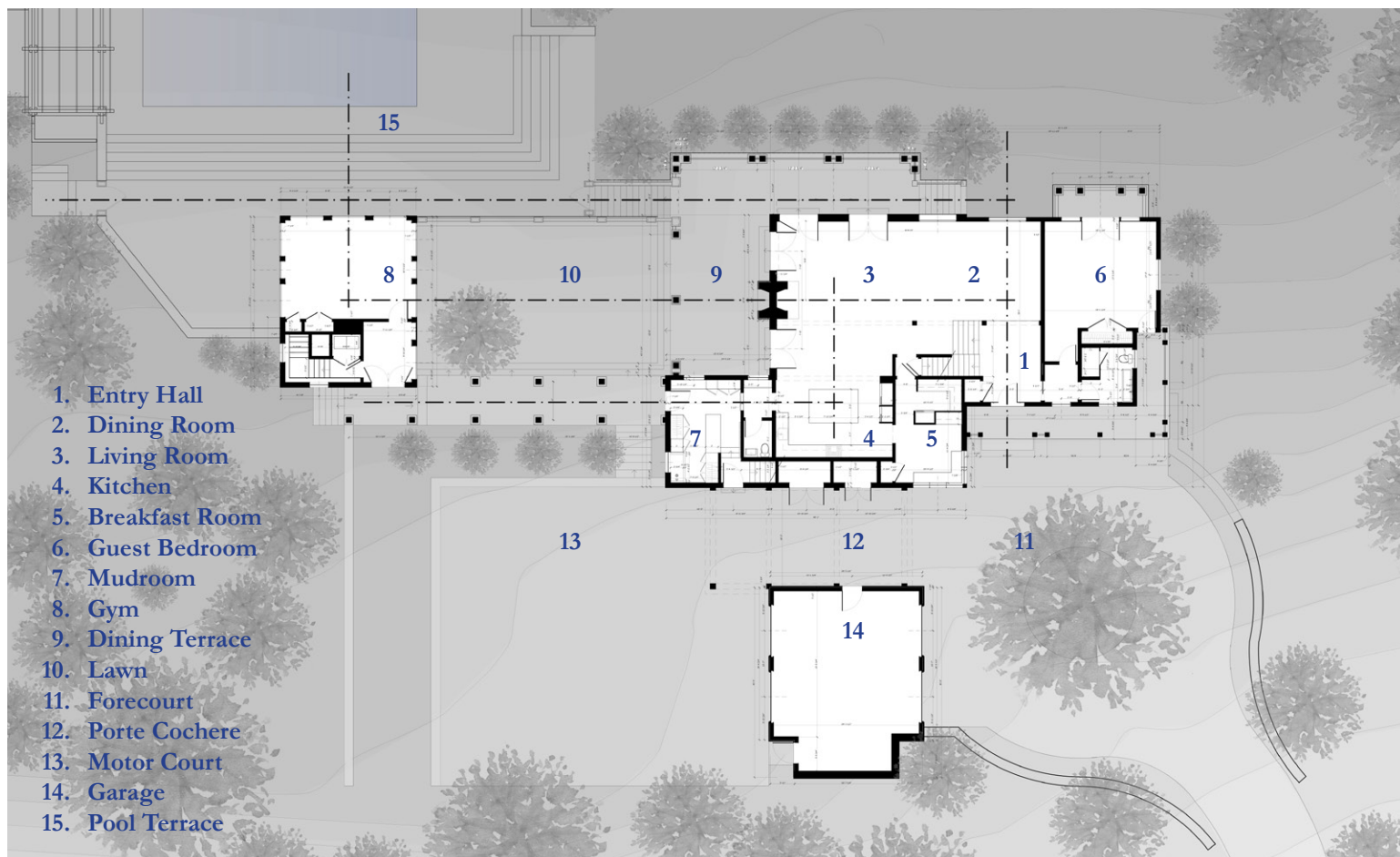




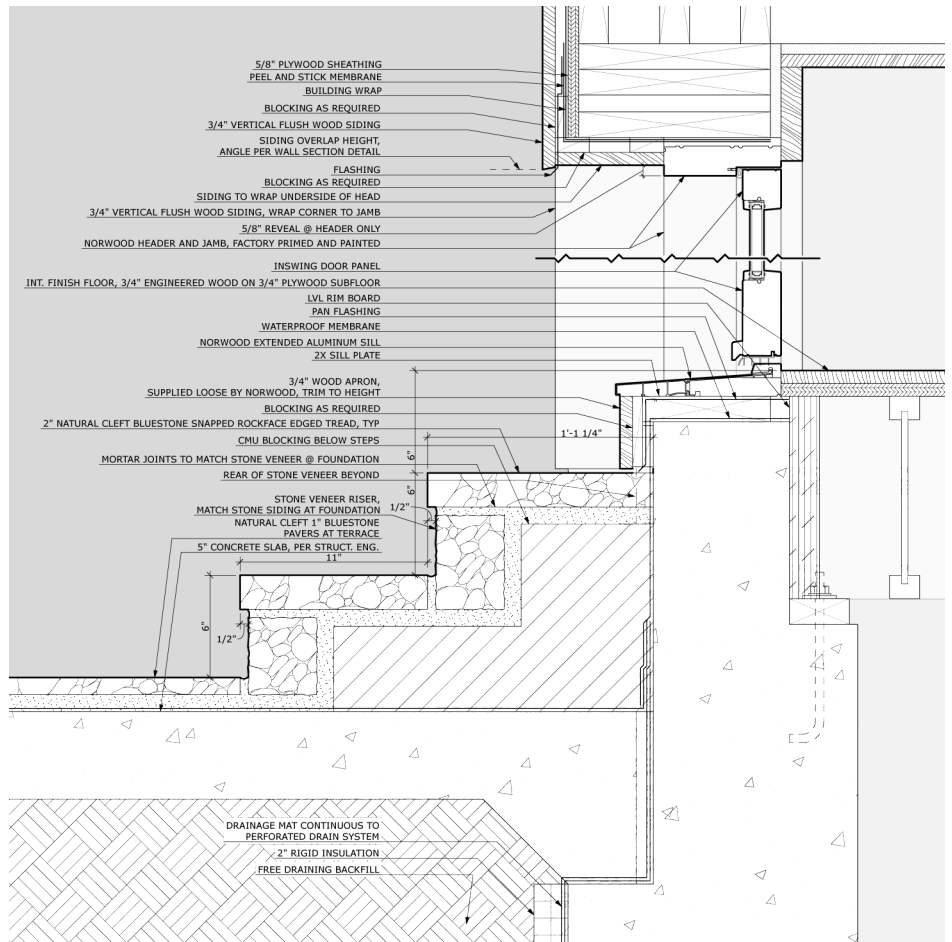
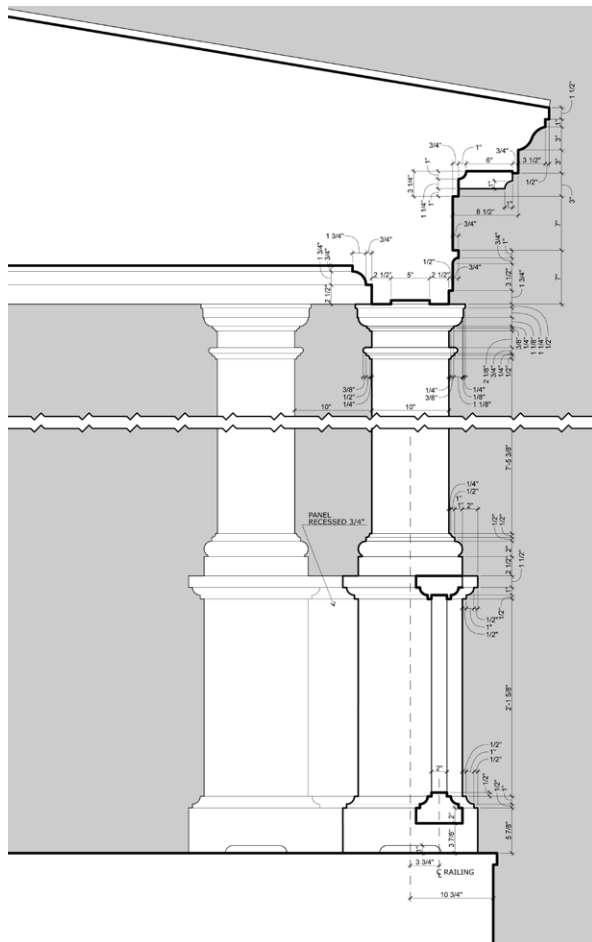


↑↓ HEAVY TIMBER PAVILION







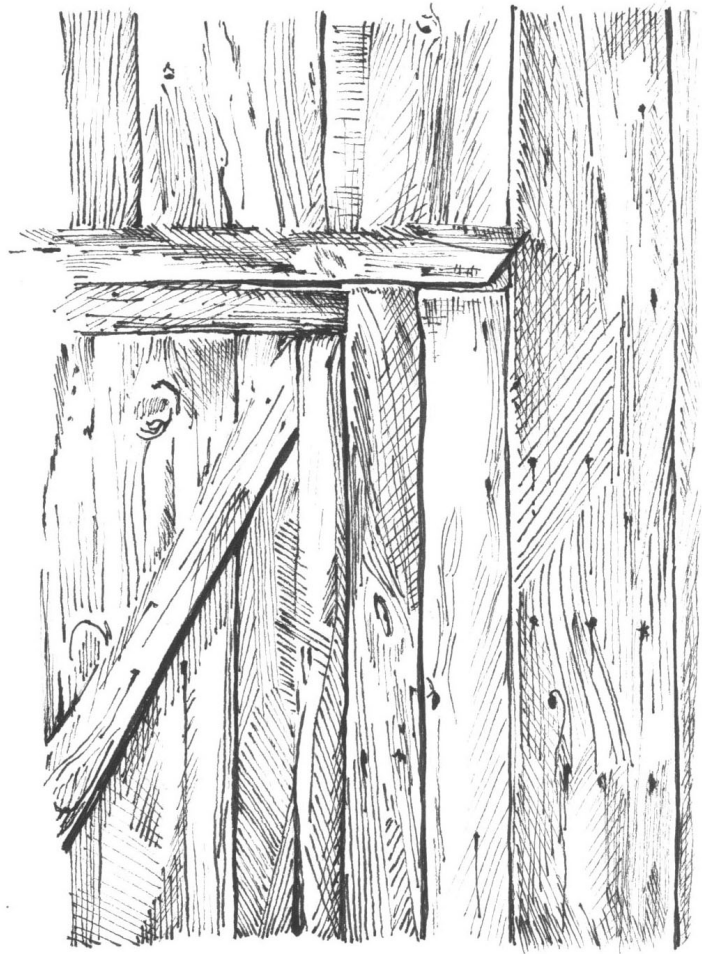




IONIC ORDER  
JOZE PLEČNIK  
LJUBLJANA, SLOVENIA  
1939

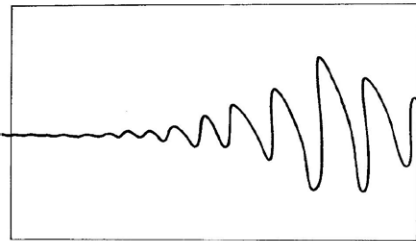








**Tropical**  
**Temperate**  
**Polar**



Broken grid lines are rearranged out of alignment, obscuring path

2

Posts are placed on broken and unbroken grid lines, with wrapped curtains between

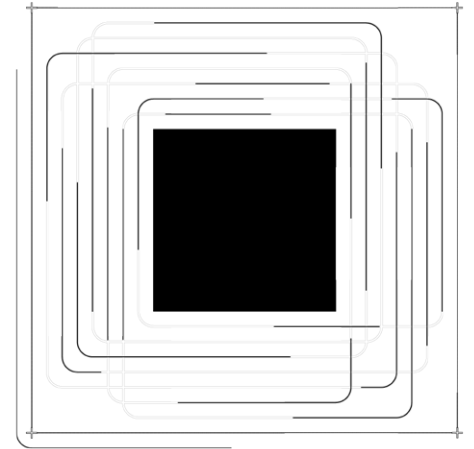
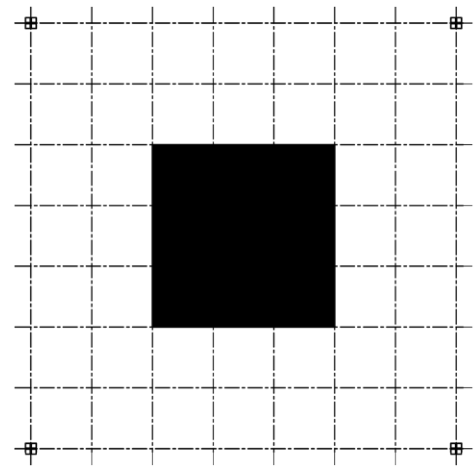
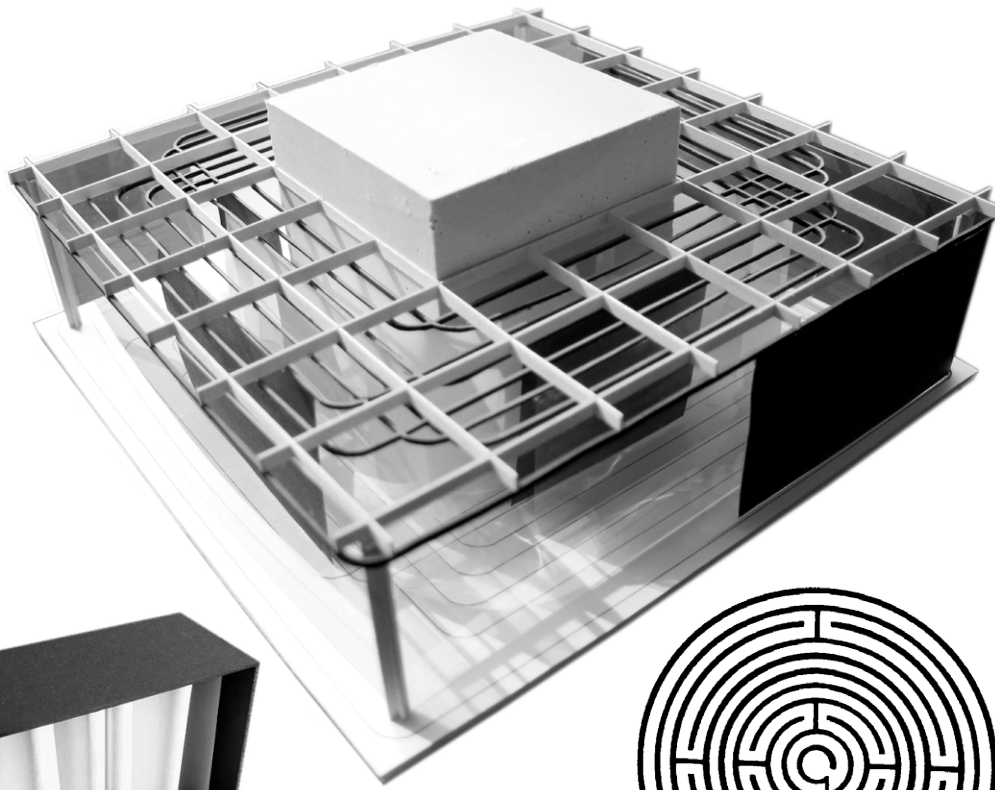
4

A black and white photograph of a complex, three-dimensional geometric sculpture. The sculpture is composed of numerous dark, angular blocks or plates arranged in a dense, stepped formation. The blocks are oriented in various directions, creating a series of sharp, intersecting planes and edges. The overall shape is roughly rectangular but with many internal facets and protrusions. The sculpture is set against a plain, light-colored background, which emphasizes its dark, textured surface and complex geometry. The lighting creates strong highlights and shadows, further defining the three-dimensional structure.



## TROPICAL

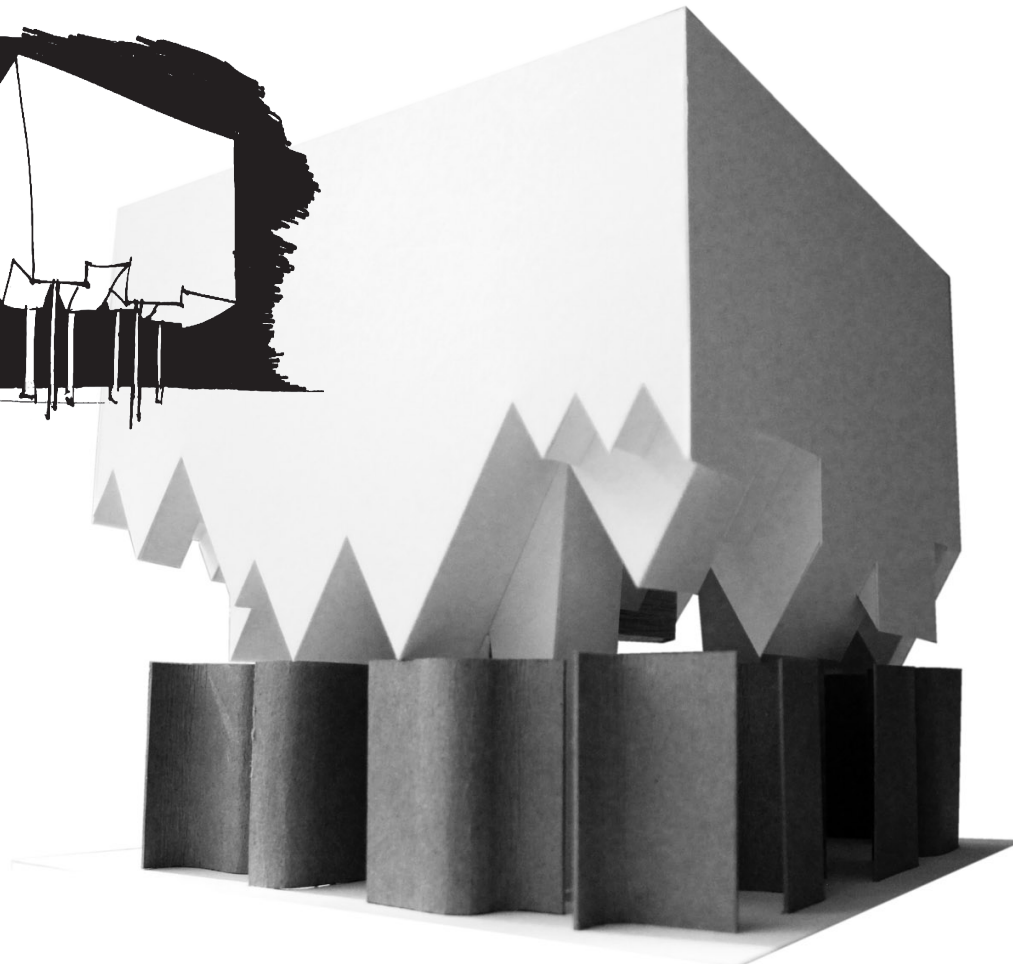
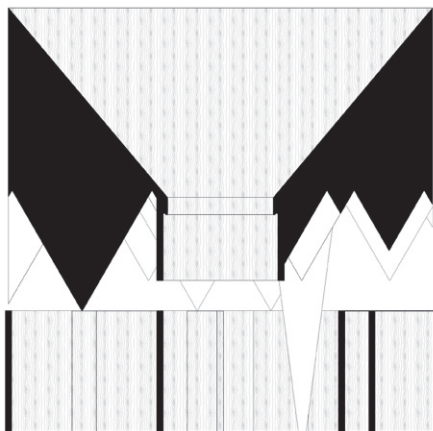
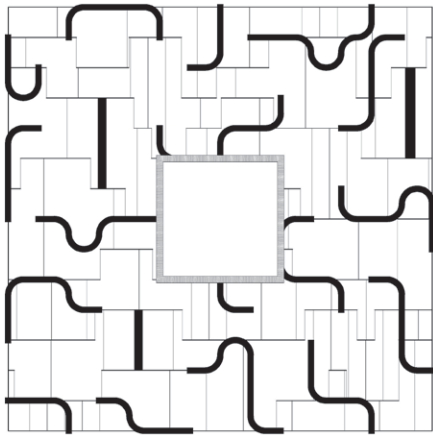


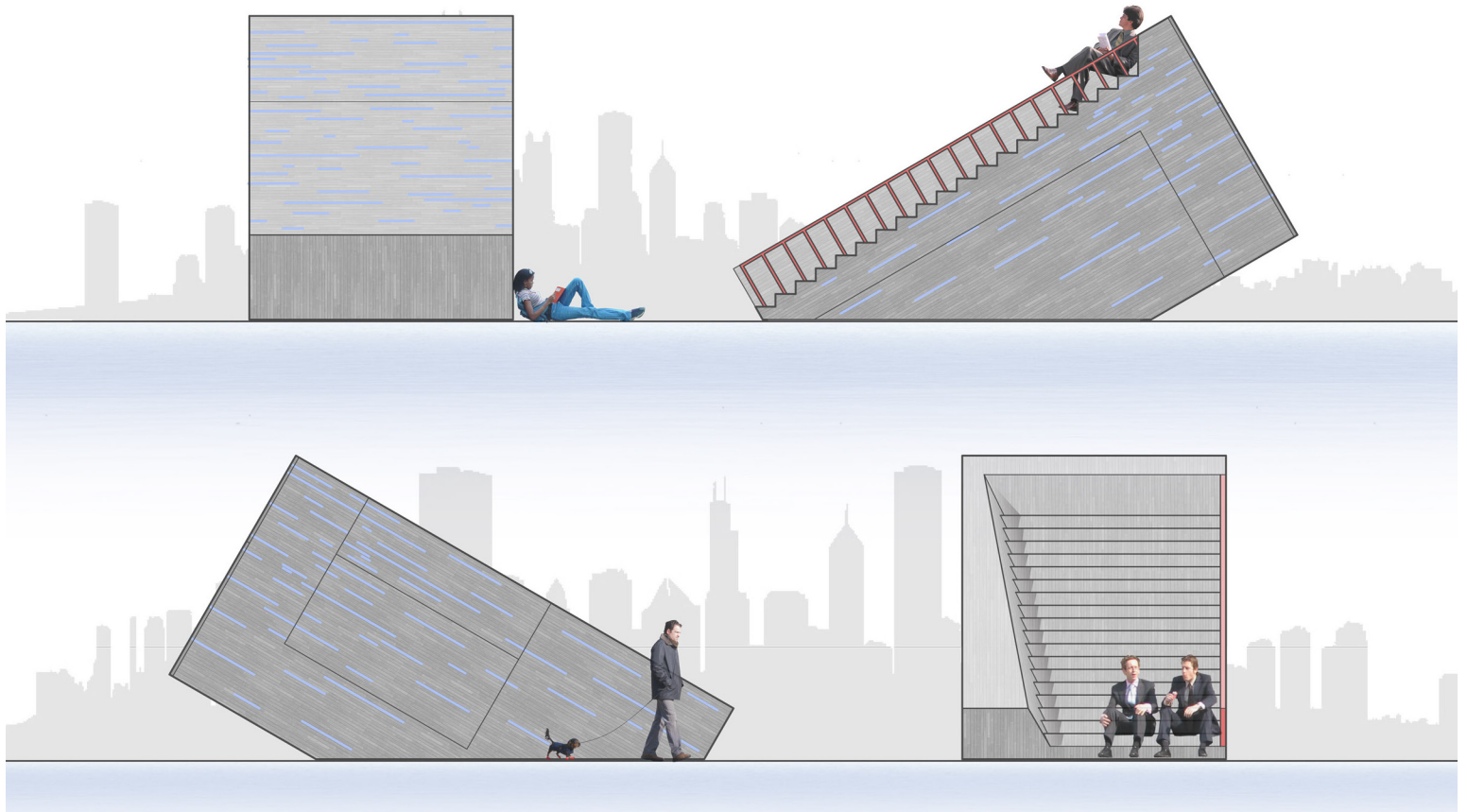


TEMPERATE



POLAR





CLOSED



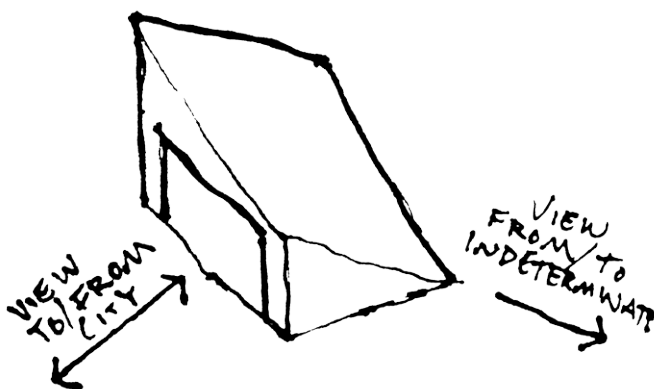
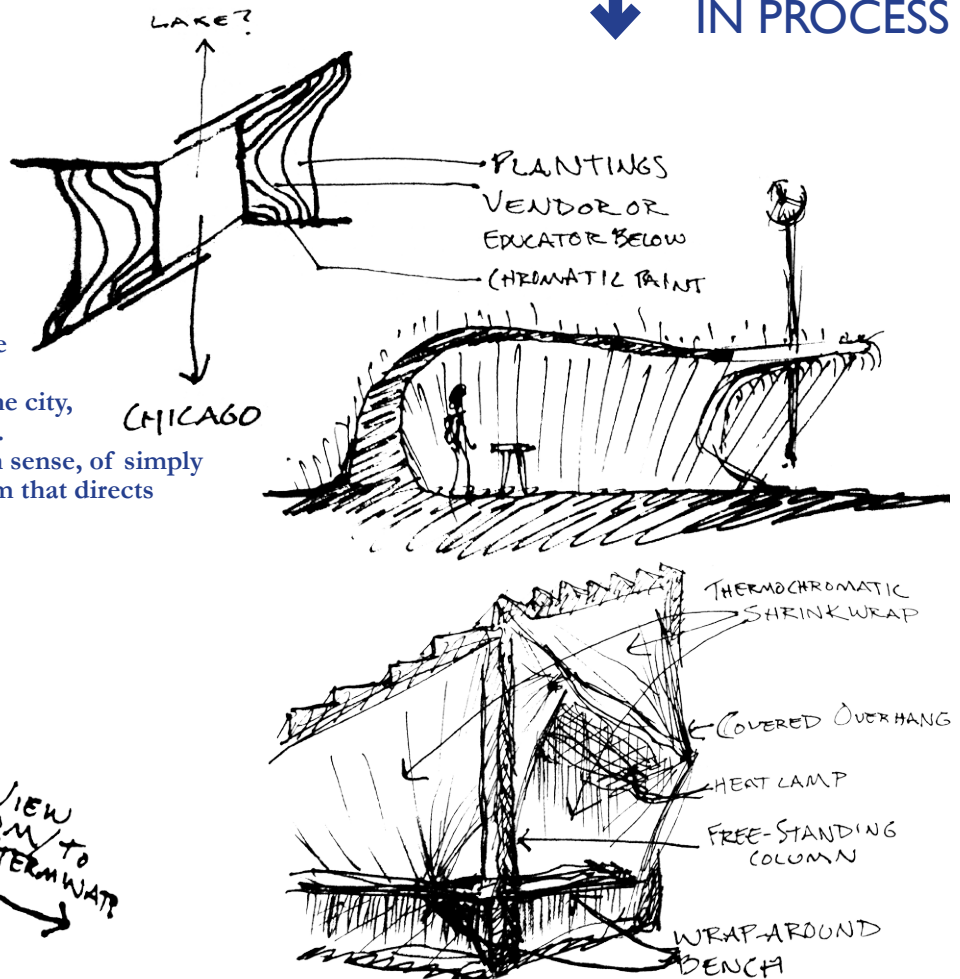
IN PROCESS

Competition stipulations:

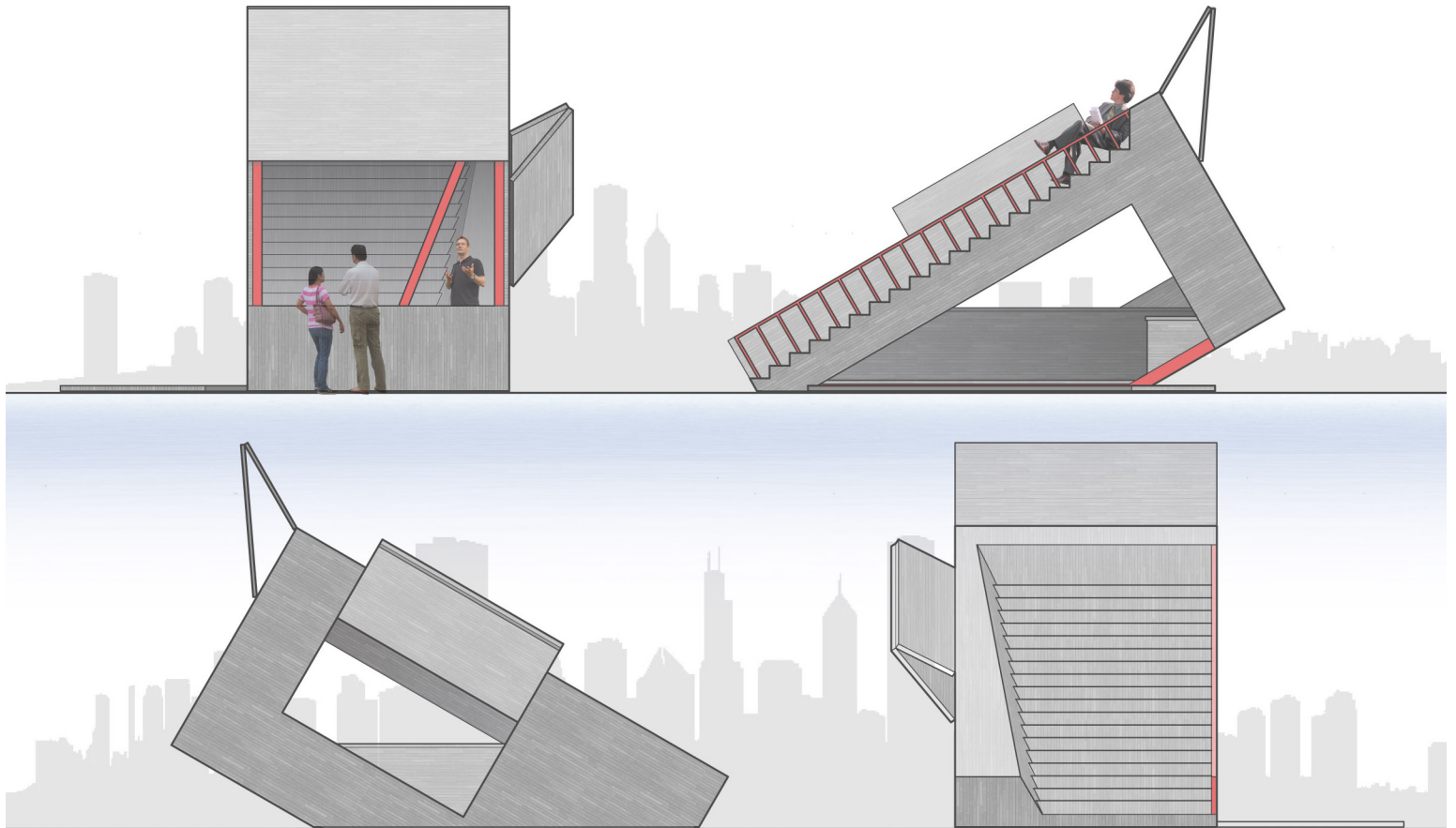
- Commercial function in Summer
- Iconic piece of Chicagoan Architecture
- Enliven lakefront year-round
- Transportable

Team project goals:

- Reflect Chicago's straightforward, clear, and beautiful ability to adapt and change to the environment, through formal changes and the use of thermochromatic paint
- Partake in the extreme climatic changes of the city, by adapting to winter sports and summer fun.
- Designing within Chicago's particular design sense, of simply used materials and a physically engaging form that directs attention back to the city from the lakeshore.







OPEN



IN SEASON



Designed collaboratively,  
Drawings and sketches created personally,  
Renderings by teammate



Collaboration with Former Classmates

Chicago Architecture Biennial